

# PHOTOGRAPH

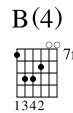
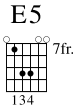
\*Tune down 1/2 step:

- ⑥ = E♭    ③ = G♭
- ⑤ = A♭    ② = B♭
- ④ = D♭    ① = E♭

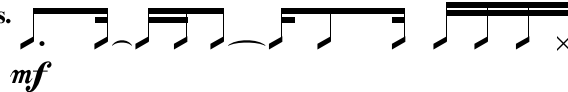
Lyrics by CHAD KROEGER  
Music by NICKELBACK

Moderately slow ♩ = 78

Intro:



Acous. Gtr.

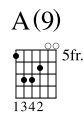
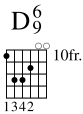


Cont. rhy. simile



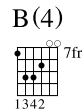
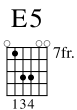
Look at this pho - to - graph, — ev-'ry time I do it makes me laugh..

\*Recording sound a half step lower than written.

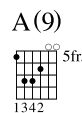
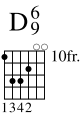


How did our eyes get — so red, — and what the hell is on Jo-ey's head? —

Verse:



1. And this is where I — grew up, — I think the pres-ent own-er fixed it up. —  
2. Re-mem-ber the old — ar - cade? Blew ev - 'ry dol - lar that we ev - er made



I nev-er knew we ev-er went with-out, — the sec-ond floor is hard for sneak-in' out. —  
The cops hat-ed us hang - in' out, — they saysome-bod - y went and burned it down.